

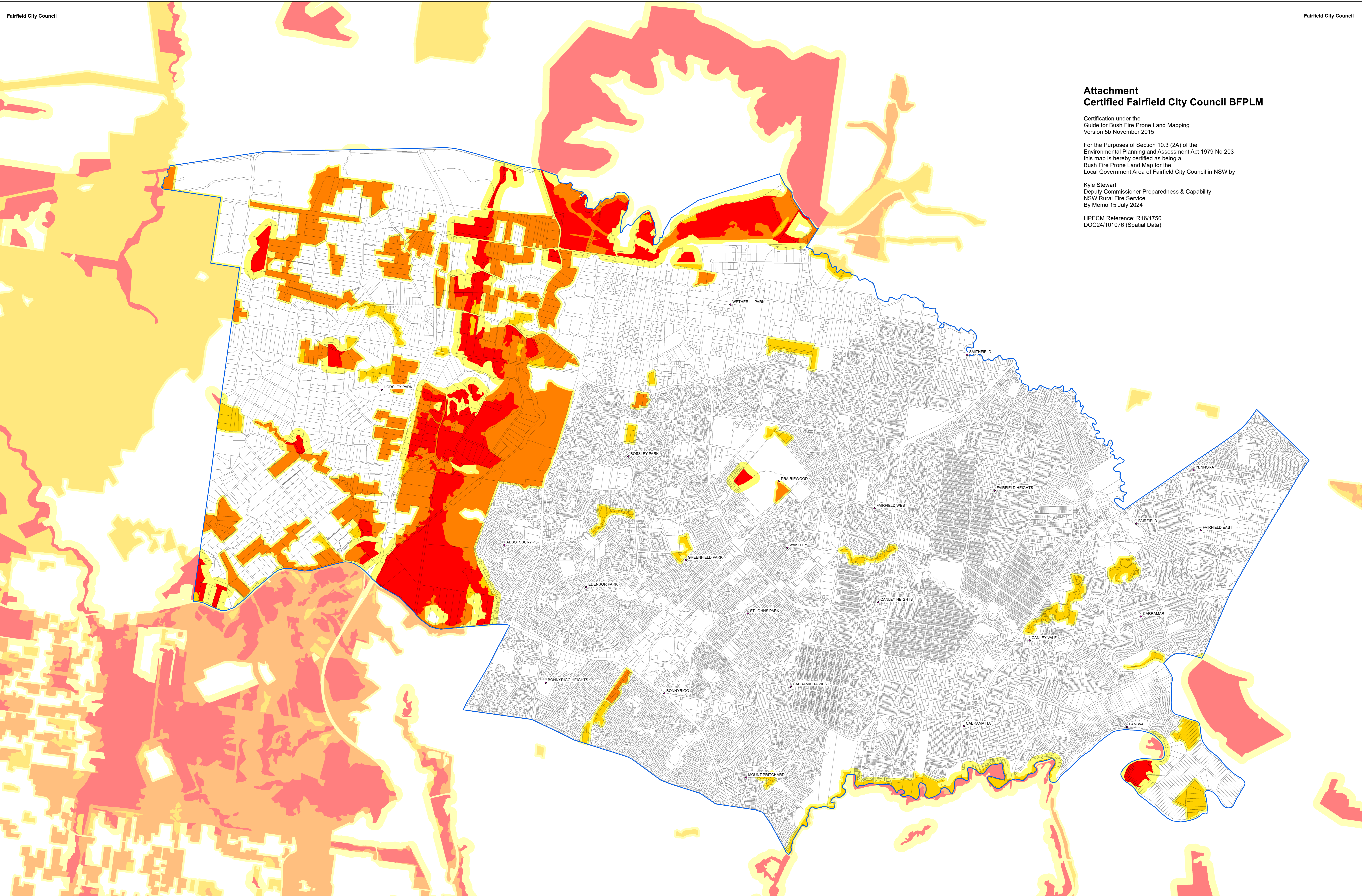
Attachment Certified Fairfield City Council BFPLM

Certification under the
Guide for Bush Fire Prone Land Mapping
Version 5b November 2015

For the Purposes of Section 10.3 (2A) of the
Environmental Planning and Assessment Act 1979 No 203
this map is hereby certified as being a
Bush Fire Prone Land Map for the
Local Government Area of Fairfield City Council in NSW by

Kyle Stewart
Deputy Commissioner Preparedness & Capability
NSW Rural Fire Service
By Memo 15 July 2024

HPECM Reference: R16/1750
DOC24/101076 (Spatial Data)

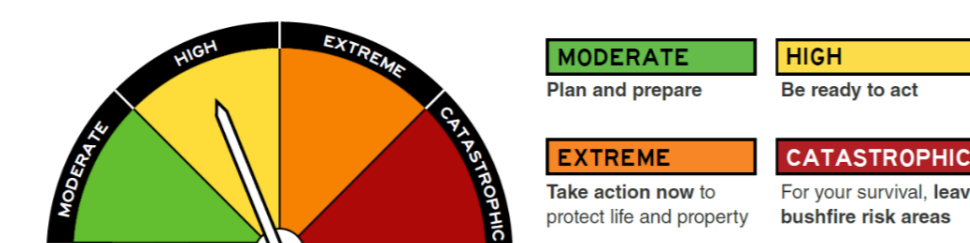


Fairfield City Council ~ Bush Fire Prone Land Map



Data supplied by various Stakeholders under ANZLIC* Guidelines.
The information contained herein has been provided in good faith.
Effort has been made to ensure its accuracy and completeness.
The Stakeholders take no responsibility for errors or omissions nor
any loss or damage that may result from the use of this information.
*Australia New Zealand Land Information Council.

The Australian Fire Danger Ratings (AFDRS) levels are:



Theme	Source	Date	Copyright
Property Information	NSW Spatial Services	2024	© Crown NSW
Local Government Boundary	NSW Spatial Services	2024	© Crown NSW
Bush Fire Prone Vegetation	NSW RFS / Council	2024	© RFS NSW 2024
Bush Fire Prone Buffer	NSW RFS	2024	© RFS NSW 2024

© Crown NSW

Legend

- Fairfield LGA
- Category
 - Vegetation Category 1
 - Vegetation Category 2
 - Vegetation Category 3
 - Vegetation Buffer

0 0.1250.25 0.5 0.75 1

Kilometres

1:17,000

Produced by
NSW RFS Development Planning & Policy
18 July 2024

PREPARE ACT SURVIVE

