



# 2024 CALENDAR

Follow us

-    @fairfieldcity
-  @DiscoverFairfield

  
**FairfieldCity**  
 Celebrating diversity



# MAYOR'S MESSAGE

## Frank Carbone

### NEW PROJECTS

Fairfield City Council's 2024 calendar is your guide to Council's annual program of events and services delivered across the City.

Our City hosts some of the best family-friendly events across NSW, like our popular New Year's Eve celebration Illuminate and the Cabramatta Moon Festival, that attract more than 100,000 people to our City each year.

All our events are listed in the calendar so you and your families don't miss the fun. As well as being a lot of fun, community events and festivals contribute to the liveability of our City and add to our sense of community and belonging.

Our signature events and family friendly attractions also help drive our tourism economy; inspiring visitation to the area from greater Sydney and beyond and providing a boost to our economy. From the award-winning Aquatopia Water Park, our super park playgrounds to Fairfield City Museum & Gallery's cultural exhibitions, programs and history; Fairfield City is an attractive destination for locals and visitors alike.

2024 will be full of activity as Council continues to invest in high quality facilities and services for the community. Some of the projects we can look forward to in 2024 include the start of works on the Indoor Entertainment and Sporting Centre at Fairfield Showground; upgrades to Brenan Park, Smithfield, Endeavour Sports Park in Fairfield West and a unique fitness park at Avenel Park in Canley Vale.

I encourage you to get involved in our events and activities for the year. Keep up to date by following us on Facebook @fairfieldcity and on Instagram @discoverfairfield.

**FRANK CARBONE**  
Mayor of Fairfield City

9725 0203 | [fcarbone@fairfieldcity.nsw.gov.au](mailto:fcarbone@fairfieldcity.nsw.gov.au)

[f](#) [i](#) FC.FrankCarbone



Indoor Entertainment and Sporting Centre (concept image)

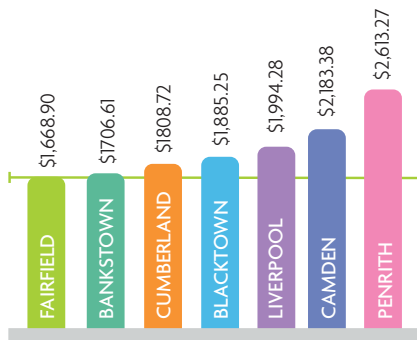


Brenan Park, Smithfield (concept plan)

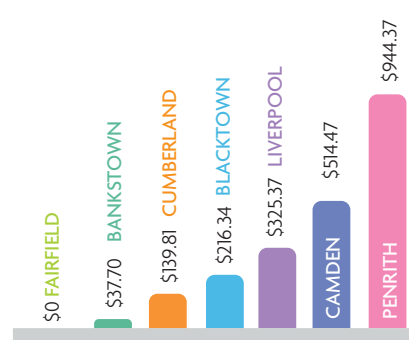


Endeavour Sports Park, Fairfield West (concept plan)

Figures are for 2023/2024 and are still preliminary and subject to change. Comparable average rates and charges based on land value of \$850,000 and a standard 240 litre bin for domestic waste.

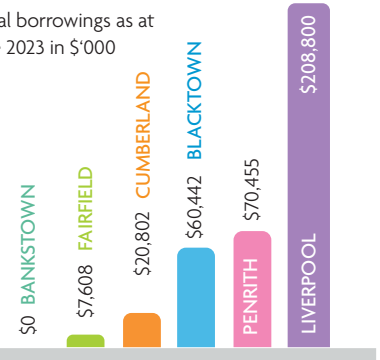


FAIRFIELD CITY COUNCIL HAS THE LOWEST AVERAGE RESIDENTIAL RATES AND CHARGES OF NEIGHBOURING COUNCILS.



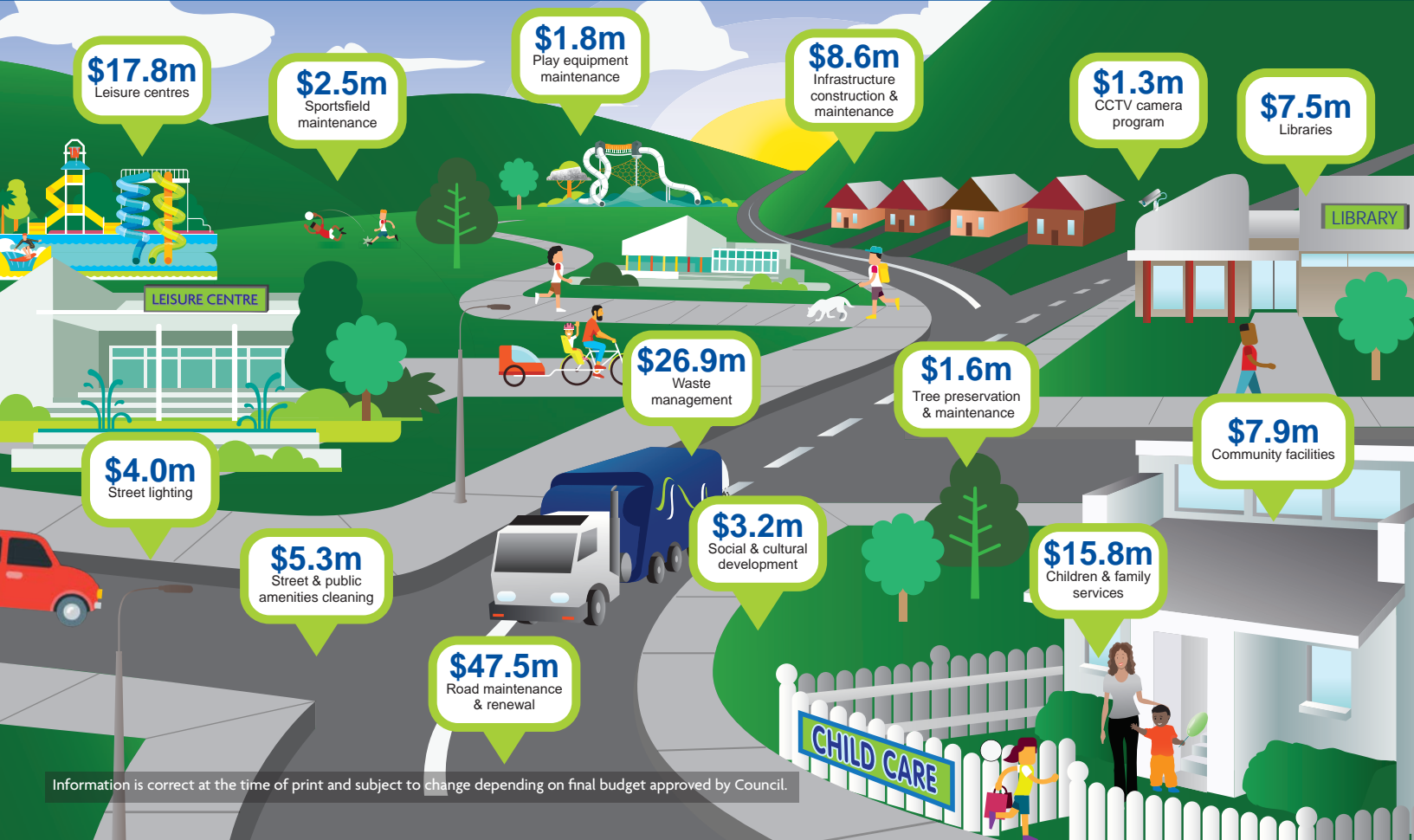
IF WE CHARGED OTHER COUNCILS' RATES, THIS IS HOW MUCH MORE RESIDENTS WOULD HAVE TO PAY PER YEAR.

Financial borrowings as at 30 June 2023 in '\$'000



FAIRFIELD CITY COUNCIL HAS ONE OF THE LOWEST BORROWINGS IN COMPARISON TO OTHER COUNCILS WHILE PROVIDING A HIGH LEVEL OF SERVICE TO THE COMMUNITY.

## A snapshot of the top areas where we plan to spend your rates and charges.



Information is correct at the time of print and subject to change depending on final budget approved by Council.



# COUNCIL SERVICES

## LEISURE CENTRES

[www.fairfieldcityleisurecentres.com.au](http://www.fairfieldcityleisurecentres.com.au)

**CABRAVALE LEISURE CENTRE**  
Broomfield Street, Cabramatta 9725 0335

**FAIRFIELD LEISURE CENTRE**  
Vine Street, Fairfield 9725 0336

**PRAIRIEWOOD LEISURE CENTRE**  
Prairie Vale Road, Prairiewood 9725 0337

## AQUATOPIA WATER PARK

Visit [www.fairfieldcityleisurecentres.com.au/aquatopia](http://www.fairfieldcityleisurecentres.com.au/aquatopia) to pre-purchase tickets or to hire a cabana for a party or special occasion.

## FAIRFIELD CITY SHOWGROUND - PARKLANDS FUNCTION CENTRE

### Parklands Function Centre

Red Gum Room - seats 250 people  
Waratah Room - seats 180 people  
Cumberland Room - seats 120 people

### Showground Pavilion

Alan Young Room - seats 120 people

For enquiries or bookings call 9725 0334 or visit [www.fairfieldshowground.com.au](http://www.fairfieldshowground.com.au)

## FAIRFIELD CITY HQ

[www.fairfieldcity.nsw.gov.au/FCHQ](http://www.fairfieldcity.nsw.gov.au/FCHQ)

Fairfield City HQ has services that will help you in your business

17 Kenyon Street, Fairfield  
9725 0899  
FCHQ@fairfieldcity.nsw.gov.au

## STUDIO HQ

High-end film and recording studio built for digital content creation

## AUDIO HQ

For podcasting services

## OPEN LIBRARIES

[www.fairfieldcity.nsw.gov.au/library](http://www.fairfieldcity.nsw.gov.au/library)

**Bonnyrigg Library** 9725 0333  
Bonnyrigg Plaza, 100 Bonnyrigg Avenue, Bonnyrigg

**Fairfield Library** 9725 0333  
1-3 Hamilton Road, Fairfield

**Smithfield Community Library**  
9725 0333  
51-57 Oxford Street, Smithfield

**Wetherill Park Library** 9725 0333  
Stockland, 561-583 Polding Street, Wetherill Park

**Whitlam Library Cabramatta**  
165 Railway Parade, Cabramatta 9725 0333

### The Workary

[www.fairfieldcity.nsw.gov.au/theworkary](http://www.fairfieldcity.nsw.gov.au/theworkary)  
theworkary@fairfieldcity.nsw.gov.au  
9725 0323

### Studio 2166

Podcasting, green screen, video and recording  
studio2166@fairfieldcity.nsw.gov.au

### lab.LX

Virtual reality, 3D printer and scanning, coding and HP Z240 Series gaming PCs and more! Lab.lx@fairfieldcity.nsw.gov.au

## FAIRFIELD CITY MUSEUM & GALLERY

Discover the unique arts and heritage of Fairfield City.

Tues to Fri 10am-4pm, Sat 10am-3pm  
634 The Horsley Drive, Smithfield (cnr Oxford Street)

Visit [www.fcmg.nsw.gov.au](http://www.fcmg.nsw.gov.au) or phone 9725 0190

## FAIRFIELD YOUTH AND COMMUNITY CENTRE

Vine Street, Fairfield 9725 0322  
After school activities:  
Community First Step 9727 4333

## COMMUNITY CENTRES, HALLS, PARKS AND SPORTSFIELDS

For hire or enquiries contact Council's Customer Service Centre on 9725 0222

## TENNIS AND FUTSAL COURTS - HIRE

**Avenel Street Tennis Centre**  
Avenel Street, Canley Vale 9725 0222

**St Johns Park Tennis Courts**  
Edensor Road, St Johns Park 9725 0222

**Brenan Park Tennis Courts**  
Brenan Street, Smithfield 9725 5240

**Mounties Tennis Courts**  
Humphries Road, Mt Pritchard 9822 3555

Online bookings now available for:

### Emerson Futsal Courts

Emerson Street, Wetherill Park 9725 0222  
[www.fairfieldcity.nsw.gov.au/futsal](http://www.fairfieldcity.nsw.gov.au/futsal)

### Fairfield Park Tennis Complex

Lawson Street, Fairfield 9725 0222  
[www.fairfieldcity.nsw.gov.au/tennis](http://www.fairfieldcity.nsw.gov.au/tennis)

## FAIRFIELD CITY GOLF COURSE

Corner of Smithfield Road and Beavors Street, Prairiewood.

For more information call 9604 4007 or visit [www.fairfieldgolf.com.au](http://www.fairfieldgolf.com.au)

## COMMUNITY BUSES

For bookings contact Council's Customer Service Centre on 9725 0222



## **BEST START EDUCATION & CARE**

General enquiries 9725 0393  
cfs@fairfieldcity.nsw.gov.au

## **LONG DAY CARE**

### **Cabramatta Early Learning Centre**

50 Eurabbie Street (corner Sussex Street),  
Cabramatta 9725 0207

### **Canley Vale Early Learning Centre**

1 Pevensey Street, Canley Vale 9725 0264

### **St Johns Park Early Learning Centre**

41 Canberra Street, St Johns Park  
9725 0227

### **Wakeley Early Learning Centre**

24B Humphries Road, Wakeley 9725 0270

### **Wetherill Park Early Learning Centre**

Stockland Town Centre, 561-583 Polding  
Street, Prairiewood 9725 0342

## **PRESCHOOLS**

### **Fairfield Preschool**

Fairfield Public School, Smart Street,  
Fairfield 9725 0128

### **Marlborough Street Preschool**

50A Marlborough Street, Smithfield  
9725 0212

### **Bossley Park Preschool**

Bossley Road, Bossley Park  
9725 0202, 0418 667 556

### **Smithfield West Preschool**

Smithfield West Public School,  
Wetherill Street, Smithfield West,  
0437 145 805

### **Mobile 2 Preschool**

Cabramatta Public School,  
7 Levuka Street, Cabramatta,  
Monday-Wednesday 0418 202 678

Cabravale Leisure Centre,  
Broomfield Street, Cabramatta,  
Thursday to Friday 0418 202 678

## **MULTIPURPOSE SERVICES**

### **Bonnyrigg Early Learning Centre**

28 Bonnyrigg Avenue, Bonnyrigg  
9725 0297

### **Janice Crosio Early Learning Centre**

27 Belfield Road, Bossley Park 9725 0346

## **Bonnyrigg Heights Early Learning Centre**

Corner of Simpson Road and Chopin Close,  
Bonnyrigg Heights 9725 0234

## **Tasman Parade Early Learning Centre**

74 Tasman Parade, Fairfield West  
9725 0238

## **FAMILY DAY CARE**

### **Fairfield City Family Day Care (Home-Based Care)**

1 Pevensey Street, Canley Vale  
9725 0367

## **FAMILY SERVICES**

### **Fairstart Early Intervention (NDIS)** 9725 0114

### **Supported Playgroups** 9725 0116

### **Families Together** 9725 0115

### **Families NSW Facilitation Project** 9725 0115

## **SUSTAINABLE RESOURCE CENTRE**

Corner of Hassall Street and Widemere  
Road, Wetherill Park. Open Monday to  
Friday 7am-3.45pm, Saturday 6am-11.45am\*  
9725 0750

[www.fairfieldcity.nsw.gov.au/SRC](http://www.fairfieldcity.nsw.gov.au/SRC)

The Sustainable Resource Centre operates  
a cement stabilisation plant, accepts  
concrete, asphalt and bricks for recycling  
and produces 10mm & 20mm aggregates,  
bedding sand and roadbase for purchase.

\*closed public holidays and days between  
Christmas and New Year's Day

## **RECYCLING DROP OFF CENTRE**

Corner Widemere and Davis roads,  
Wetherill Park  
Every Saturday, 8am-3.30pm\* 9725 0222

This centre is for Fairfield City residents  
only. Proof of residency is required upon  
entry.

\*closed public holidays and  
days between Christmas  
and New Year's Day



## **CUSTOMER SERVICE CENTRE ADMINISTRATION BUILDING**

86 Avoca Road, Wakeley 8.30am-4.30pm

**Call Centre** 9725 0222, 8.30am-5pm  
**Interpreter Service (TIS)** 13 14 50  
**National Relay Service (NRS)** 133 677

**Mail** PO Box 21, Fairfield NSW 1860  
**Email** [mail@fairfieldcity.nsw.gov.au](mailto:mail@fairfieldcity.nsw.gov.au)

# DISCOVER FAIRFIELD

## DEERBUSH PARK ALL-ABILITIES PLAYGROUND

Deerbrush Park playground has something for everyone to enjoy, no matter their ability. The park is a first of its kind for Fairfield City, and includes accessible play equipment and facilities for wheelchair users and their carers; a water play space operating in warmer months; and connects to Fairfield Showground's new circuit of walking, rolling and cycling tracks and picnic areas.

## FAIRFIELD PARK PRECINCT

The Fairfield Park Precinct in Vine Street is the perfect place for families.

### Fairfield Adventure Park

The Fairfield Adventure Park features an 11m high giant climbing net and a sky-bridge with a three-slide combination.

### Fairfield Youth and Community Centre

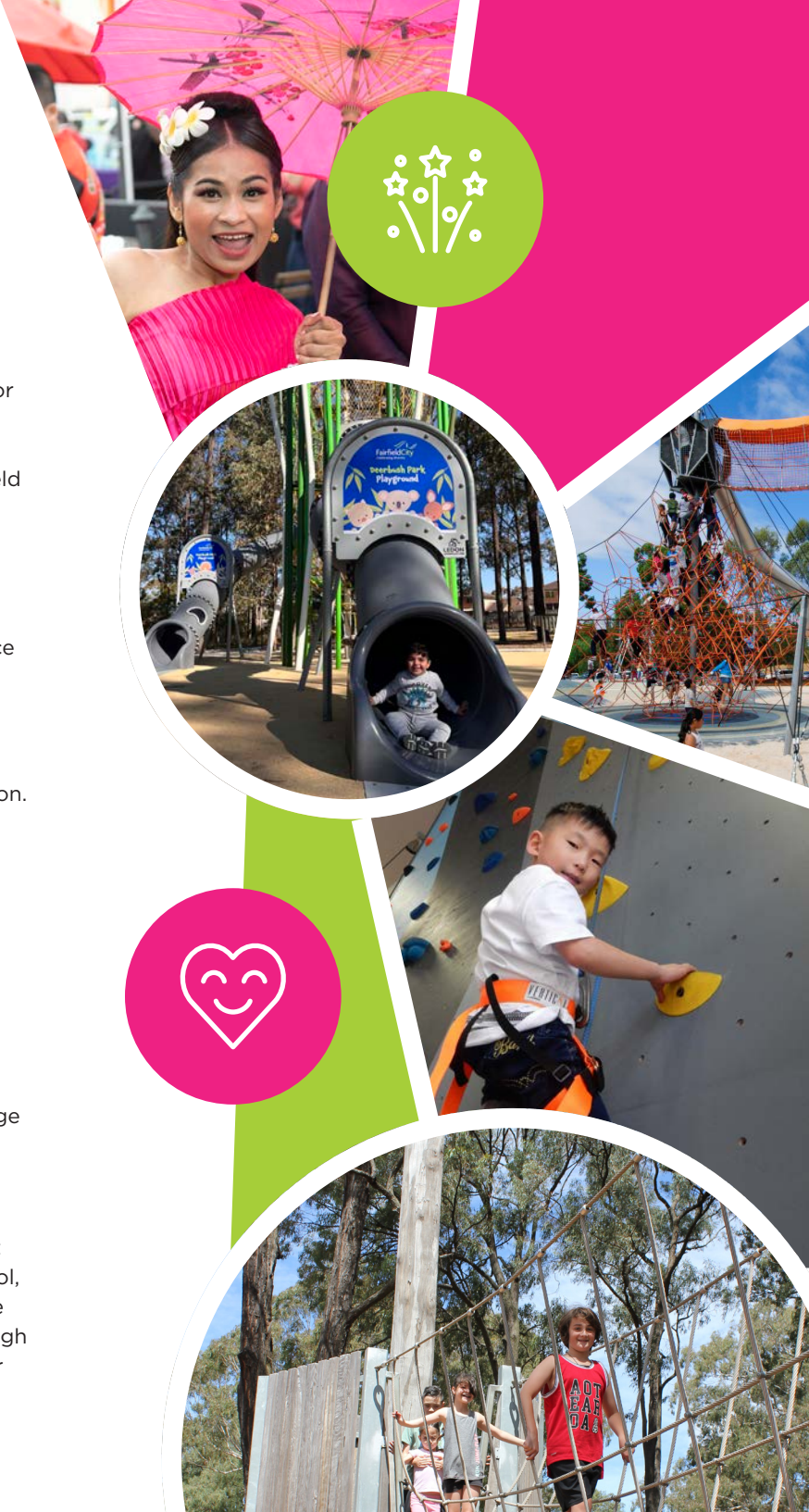
The Fairfield Youth and Community Centre features something for everyone, with multi-sport courts, inbuilt trampolines, breakout space and program rooms. Entry is free on the first Sunday of every month from 11am-3pm, 9725 0322.

### Fairfield Obstacle Course

The Fairfield Obstacle Course will test your strength and endurance with a three-metre high treetop walk, rope bridge crossing, flying foxes, tyre climbs, rope climbs and more.

## AQUATOPIA WATER PARK

Aquatopia is Fairfield City's premier water park. Located at Prairiewood Leisure Centre, it is home to the 55m wave pool, 20m tall high-speed thrill slides, the Wave Rider, Adventure Aqua Tower and toddler pool. Open from September through to April, visit [www.fairfieldcitycity.nsw.gov.au/aquatopia](http://www.fairfieldcitycity.nsw.gov.au/aquatopia) for opening times and to book online.



## FAIRFIELD CITY MUSEUM & GALLERY

Fairfield City Museum & Gallery has been around for almost four decades and is one of the go-to cultural experiences in the Greater Western Sydney region. It boasts a full and varied program of exhibitions, from contemporary art to social history and community-based works, as well as events, workshops and tours that dive into the history of the local area. For more information visit [www.fcmg.nsw.gov.au](http://www.fcmg.nsw.gov.au)

## CYCLING AND WALKING PATHS

Council maintains a 90km network of bike paths, and many more walking paths and trails that are perfect for a solo or group ride, or for a walk in the fresh air. Discover our City's bike paths at [www.fairfieldcity.nsw.gov.au/cycleways](http://www.fairfieldcity.nsw.gov.au/cycleways).

## FAIRFIELD MARKETS

Fairfield Showground hosts Fairfield City Markets every Saturday from 9am to 4pm. The Markets are very popular with more than 600 stalls, free entry and lots of parking.

For more information on family fun activities and events in our City visit [www.fairfieldcity.nsw.gov.au/events](http://www.fairfieldcity.nsw.gov.au/events)

Keep up to date by following us on Facebook @fairfieldcity and on Instagram @discoverfairfield or scan the QR code to visit our website.



DISCOVER  
FAIRFIELD |  
COUNCIL BY FAIRFIELD CITY



Australia Day Community Award winners 2023

Australia Day

Celebrating diversity

Australia Day

FairfieldCity  
Celebrating diversity

Australia Day Fireworks, Canley Heights



Australia  
Day

JANUARY  
2024





SUN	MON	TUE	WED	THU	FRI	SAT
	1 <b>NEW YEAR'S DAY</b>	2 <b>LEARN TO SWIM SCHOOL HOLIDAY PROGRAM COMMENCES</b> Leisure Centres	3	4 <b>ADULTS READING ALOUD</b> every Thursday at Fairfield Library 10-11.30am <b>PENSION DAY</b>	5	6 <b>FAIRFIELD CITY MARKETS</b> 9am-4pm
7 <b>ORTHODOX CHRISTMAS DAY</b>	8	9 <b>LONG DAY CARE AND MULTIPURPOSE SERVICES OPEN</b>	10	11 <b>LEGAL AID CLINIC</b> Whitlam Library 9.30am-1.30pm	12	13 <b>FAIRFIELD CITY MARKETS</b> 9am-4pm
14 <b>ORTHODOX NEW YEAR</b>	15	16	17	18 <b>PENSION DAY</b>	19	20 <b>INDIGENOUS FLORA PARK BUSHCARE GROUP</b> 9am-12pm <b>FAIRFIELD CITY MARKETS</b> 9am-4pm
21	22	23 <b>PRESCHOOLS OPEN</b>	24	25 <b>LEGAL AID CLINIC</b> Whitlam Library 9.30am-1.30pm	26 <b>AUSTRALIA DAY AWARDS CEREMONY</b> Aquatopia, Prairiewood Leisure Centre <b>AUSTRALIA DAY EVENTS</b> FYCC, Fairfield & Prairiewood Leisure Centres <b>CANLEY HEIGHTS AUSTRALIA DAY FIREWORKS</b> 9PM <b>AUSTRALIA DAY</b>	27 <b>FAIRFIELD CITY MARKETS</b> 9am-4pm
28	29 <b>LEARN TO SWIM TERM 1 COMMENCES</b> Leisure Centres	30	31			

- Fairfield City Council major events
- Other Council events
- FCHQ = Fairfield City HQ
- FCCMG = Fairfield City Museum & Gallery
- FYCC = Fairfield Youth and Community Centre
- Sports and leisure centre events
- Public holidays and school terms
- Library events
- Pension days
- Significant events

# JANUARY



CABRAMATTA  
**LUNAR NEW YEAR**  
2024  
YEAR OF THE DRAGON

Fairfield City  
Celebrating Diversity

**FEBRUARY**  
**2024**



SUN	MON	TUE	WED	THU	FRI	SAT
				1  STATE SCHOOL TERM 1 BEGINS (check with your school to confirm) PENSION DAY	2  BOOK GROUPS Wetherill Park Library 10am-12.30pm	3 OPEN LAB every Saturday at Whitlam and Bonnyrigg libraries A WHISPER ECHOES LOUDEST Community Day FCMG FAIRFIELD CITY MARKETS 9am-4pm CANLEY HEIGHTS LUNAR NEW YEAR EVENT 5-9pm
4  FREE WSCN COMMUNITY BIKE RIDES Fairfield Showground 9am-12noon FAIRFIELD YOUTH AND COMMUNITY CENTRE Free Open Day 11am-3pm	5  FOCUS ON LIBRARY APPS Bonnyrigg Library 10am-1pm	6  AFTERNOON ADVENTURES every Tuesday Fairfield Library 4-5pm JP every Tuesday Fairfield Library 1.30-3pm Wetherill Park Library 11am-1pm	7  SEWING CENTRE Wednesdays Whitlam Library 10am-2pm JP Wednesdays Whitlam Library 9.30am-12pm Bonnyrigg Library 3-5pm AFTERNOON ADVENTURES Fairfield Library 4-5pm	8  ADULTS READING ALOUD Thursdays Fairfield Library 10-11.30am LEGAL AID CLINIC Whitlam Library 9.30am-1.30pm	9	10  FAIRFIELD CITY MARKETS 9am-4pm LUNAR NEW YEAR
11	12  TRAFFIC COMMITTEE 2.30pm	13  GYMS IN PARKS TERM 1 Tuesdays and Thursdays 13 Feb-28 Mar OUTCOMES & SERVICES COMMITTEE MEETINGS 6.30pm ANNIVERSARY NATIONAL APOLOGY DAY	14  VALENTINE'S DAY	15  PENSION DAY	16	17  INDIGENOUS FLORA PARK BUSHCARE GROUP 9am-12pm FAIRFIELD CITY MARKETS 9am-4pm
18   DISCOVER FAIRFIELD ADVENTURE PARK EVENT	19	20  LOVE YOUR PET DAY	21	22  LEGAL AID CLINIC Whitlam Library 9.30am-1.30pm	23  BOOK GROUPS Bonnyrigg & Fairfield Libraries 10.30am-12.30pm	24  LANGUAGE EXCHANGE EXHIBITION OPENS FCMG FAIRFIELD CITY MARKETS 9am-4pm CABRAMATTA LUNAR NEW YEAR EVENT Year of the Dragon 11am-9pm
25	26  BOOK GROUPS Smithfield Library 10-11.30am	27  COUNCIL MEETING 7pm	28  RATES INSTALMENT DUE	29  PENSION DAY		

- Fairfield City Council major events
- Other Council events
- FCHQ = Fairfield City HQ
- FCMG = Fairfield City Museum & Gallery
- FYCC = Fairfield Youth and Community Centre
- Sports and leisure centre events
- Public holidays and school terms
- Library events
- Pension days
- Significant events

# FEBRUARY

Koonoona Park, Villawood

Bareena Park, Canley Vale

Love  
where you  
Play



MARCH  
2024



NSW  
FAIRFIELD HEIGHTS PARK  
PLAYGROUND OPENING



Fairfield City  
Deerbush Park  
Playground



Fairfield Heights Park Playground opening

Deerbush Park Playground

SUN	MON	TUE	WED	THU	FRI	SAT
<b>31</b>  <b>NEIGHBOUR DAY</b>					<b>1</b>  <b>BOOK GROUPS</b> Wetherill Park Library 10am-12.30pm <b>COMMUNITY DEVELOPMENT GRANTS &amp; CREATIVE COMMUNITY GRANTS OPEN</b>	<b>2</b>  <b>OPEN LAB</b> every Saturday at Whitlam and Bonnyrigg libraries <b>LUNAR NEW YEAR BLESSING OF FAIRFIELD CITY AND COMMUNITY</b> 9.30am-12.30pm <b>FAIRFIELD CITY MARKETS</b> 9am-4pm
<b>3</b>  <b>FREE WSCN COMMUNITY BIKE RIDES</b> Fairfield Showground 9am-12noon <b>FAIRFIELD YOUTH AND COMMUNITY CENTRE</b> Free Open Day 11am-3pm <b>CLEAN UP AUSTRALIA DAY</b>	<b>4</b>  <b>FOCUS ON LIBRARY APPS</b> Bonnyrigg Library 10am-1pm	<b>5</b>  <b>JP</b> Fairfield Library 1.30-3pm Wetherill Park Library 11am-1pm	<b>6</b>  <b>SEWING CENTRE</b> every Wednesday Whitlam Library 10am-2pm <b>JP</b> every Wednesday Whitlam Library 9.30am-12pm Bonnyrigg Library 3-5pm	<b>7</b>  <b>ADULTS READING ALOUD</b> every Thursday Fairfield Library 10-11.30am <b>LEGAL AID CLINIC</b> Whitlam Library 9.30am-1.30pm <b>BILINGUAL STORYTIME</b> Fairfield Library 10.30-11.30am (English/Arabic)	<b>8</b>  <b>INTERNATIONAL WOMEN'S DAY EVENT</b> FCMG <b>INTERNATIONAL WOMEN'S DAY</b>	<b>9</b>  <b>COMMUNITY NURSERY OPEN DAY</b> Nalawala Sustainability Centre 9am-3pm <b>FAIRFIELD CITY MARKETS</b> 9am-4pm
<b>10</b>	<b>11</b>  <b>NSW SENIORS WEEK</b>	<b>12</b>  <b>JP</b> Fairfield Library 1.30-3pm Wetherill Park Library 11am-1pm <b>OUTCOMES &amp; SERVICES COMMITTEE MEETINGS</b> 6.30pm	<b>13</b>	<b>14</b>  <b>PENSION DAY</b>	<b>15</b>	<b>16</b>  <b>LANGUAGE EXCHANGE: COMMUNITY DAY</b> FCMG <b>INDIGENOUS FLORA PARK BUSHCARE GROUP</b> 9am-12pm <b>FAIRFIELD CITY MARKETS</b> 9am-4pm
<b>17</b>    <b>DISCOVER KOONOONA PARK VILLAWOOD EVENT</b>	<b>18</b>  <b>HARMONY WEEK</b>	<b>19</b>  <b>JP</b> Fairfield Library 1.30-3pm Wetherill Park Library 11am-1pm <b>SENIORS EXPO</b> Fairfield Showground	<b>20</b>	<b>21</b>  <b>LEGAL AID CLINIC</b> Whitlam Library 9.30am-1.30pm <b>NATIONAL CLOSE THE GAP DAY &amp; HARMONY DAY</b>	<b>22</b>  <b>EASTER PRESCHOOL STORYTIME</b> Fairfield and Wetherill Park libraries 10.30-11.30am	<b>23</b>  <b>FAIRFIELD CITY MARKETS</b> 9am-4pm <b>EARTH HOUR</b>
<b>24</b>	<b>25</b>  <b>EASTER PRESCHOOL STORYTIME</b> Smithfield Library 10.30-11.30am <b>CAPTURE FAIRFIELD</b> Competition opens <b>MAYOR'S YOUTH ACHIEVEMENT AWARDS</b> Nominations open	<b>26</b>  <b>JP</b> Fairfield Library 1.30-3pm Wetherill Park Library 11am-1pm <b>COUNCIL MEETING</b> 7pm	<b>27</b>  <b>EASTER BUNNY VISITS FAIRFIELD HEIGHTS</b> 1.30-3.30pm <b>EASTER BUNNY VISITS CANLEY VALE</b> 12-2pm <b>EASTER BUNNY VISITS CANLEY HEIGHTS</b> 3-5pm	<b>28</b>  <b>EASTER BUNNY VISITS FAIRFIELD CITY CENTRE</b> 11.30am-1.30pm <b>PENSION DAY</b>	<b>29</b>  <b>GOOD FRIDAY</b>	<b>30</b>  <b>FAIRFIELD CITY MARKETS</b> 9am-4pm <b>EASTER SATURDAY</b>

- Fairfield City Council major events
- Other Council events
- Sports and leisure centre events
- Public holidays and school terms
- FCHQ = Fairfield City HQ
- FCMG = Fairfield City Museum & Gallery
- FYCC = Fairfield Youth and Community Centre
- Library events
- Pension days
- Significant events

# MARCH



BRING IT ON!  
FESTIVAL

**APRIL**  
**2024**



SUN	MON	TUE	WED	THU	FRI	SAT	
	<b>1</b> FOCUS ON LIBRARY APPS Bonnyrigg Library 10am-1pm ASSYRIAN/CHALDEAN NEW YEAR EASTER MONDAY	<b>2</b> COMMUNITY DEVELOPMENT GRANTS & CREATIVE COMMUNITY GRANTS CLOSE JP every Tuesday at Fairfield Park Library 11am-1pm	<b>3</b> SEWING CENTRE every Wednesday at Whitlam Library 10am-2pm JP every Wednesday at Whitlam Library 9.30-12pm Bonnyrigg Library 3-5pm	<b>4</b> LEGAL AID CLINIC Whitlam Library 9.30am-1.30pm ADULTS READING ALOUD every Thursday at Fairfield Library 10-11.30am	<b>5</b>	<b>6</b> OPEN LAB every Saturday at Whitlam and Bonnyrigg libraries FAIRFIELD CITY MARKETS 9am-4pm	
<b>EASTER SUNDAY</b>	<b>7</b> FREE WSCN COMMUNITY BIKE RIDES Fairfield Showground 9am-12noon FAIRFIELD YOUTH AND COMMUNITY CENTRE Free Open Day 11am-3pm DAYLIGHT SAVING TIME ENDS (clocks go back one hour at 3am)	<b>8</b> TRAFFIC COMMITTEE 2.30pm	<b>9</b> SENIORS BUS TOUR OUTCOMES & SERVICES COMMITTEE MEETINGS 6.30pm	<b>10</b> EID-AL-FITR	<b>11</b> SENIORS BUS TOUR YOUTH WEEK NSW 11-21 Apr PENSION DAY	<b>12</b> STATE SCHOOL TERM 1 ENDS (check with your school to confirm)	<b>13</b> FAIRFIELD CITY MARKETS 9am-4pm KHMER/LAO/THAI NEW YEAR
<b>14</b>	<b>15</b> LEARN TO SWIM SCHOOL HOLIDAY PROGRAM COMMENCES Leisure Centres	<b>16</b> AUTUMN SCHOOL HOLIDAY PROGRAM BEGINS FCMG	<b>17</b>	<b>18</b> LEGAL AID CLINIC Whitlam Library 9.30am-1.30pm	<b>19</b>	<b>20</b> FAIRFIELD CITY MARKETS 9am-4pm INDIGENOUS FLORA PARK BUSHCARE GROUP 9am-12pm	
<b>21</b>  DISCOVER DEERBUSH PARK PRAIRIEWOOD EVENT  BRING IT ON! FESTIVAL	<b>22</b>	<b>23</b> COUNCIL MEETING 7pm	<b>24</b>	<b>25</b>  ANZAC DAY PENSION DAY	<b>26</b> BOOK GROUPS Bonnyrigg & Fairfield libraries 10.30am-12.30pm	<b>27</b> VILLAWOOD EXHIBITION OPENS FCMG FAIRFIELD CITY MARKETS 9am-4pm	
<b>28</b> AQUATOPIA WATER PARK CLOSES FOR THE SEASON	<b>29</b> BOOK GROUPS Smithfield Library 10-11.30am LEARN TO SWIM TERM 2 COMMENCES Leisure Centres STATE SCHOOL TERM 2 BEGINS (check with your school to confirm)	<b>30</b>					

- Fairfield City Council major events
  - Other Council events
  - Sports and leisure centre events
  - Public holidays and school terms
  - Library events
  - Pension days
  - Significant events
- FCHQ = Fairfield City HQ  
FCMG = Fairfield City Museum & Gallery  
FYCC = Fairfield Youth and Community Centre

# APRIL



FAIRFIELD CITY COUNCIL'S  
**MAY**  
*Culinary*  
**2024**  
CARNIVAL





SUN	MON	TUE	WED	THU	FRI	SAT
			<b>1</b> <b>SEWING CENTRE</b> every Wednesday at Whitlam Library 10am-2pm <b>JP</b> every Wednesday at Whitlam Library 9.30am-12pm Bonnyrigg Library 3-5pm <b>HERITAGE DISCOVERY WALK</b> Cabravale 10am-1pm	<b>2</b> <b>ADULTS READING ALOUD</b> every Thursday at Fairfield Library 10-11.30am <b>HERITAGE DISCOVERY WALK</b> Cabravale 10am-1pm	<b>3</b>	<b>4</b> <b>OPEN LAB</b> every Saturday at Whitlam and Bonnyrigg libraries <b>FAIRFIELD CITY MARKETS</b> 9am-4pm
<b>5</b> <b>FREE WSCN COMMUNITY BIKE RIDES</b> Fairfield Showground 9am-12noon <b>FAIRFIELD YOUTH AND COMMUNITY CENTRE</b> Free Open Day 11am-3pm <b>ORTHODOX EASTER</b>	<b>6</b> <b>MOTHER'S DAY STORYTIME</b> Smithfield Library 10.30-11.30am <b>FOCUS ON LIBRARY APPS</b> Bonnyrigg Library 10am-1pm	<b>7</b> <b>MOTHER'S DAY EVENING STORYTIME</b> Wetherill Park Library 6.30-7.30pm <b>JP</b> every Tuesday at Fairfield Library 1.30-3pm Wetherill Park Library 11am-1pm	<b>8</b> <b>MOTHER'S DAY PRESCHOOL STORYTIME</b> Bonnyrigg and Whitlam libraries 10.30-11.30am <b>MOTHER'S DAY IN FAIRFIELD HEIGHTS</b> 1.30-3.30pm	<b>9</b> <b>MOTHER'S DAY IN:</b> Fairfield 11.30am-1.30pm Canley Vale 12-2pm Canley Heights 3-5pm <b>PENSION DAY</b>	<b>10</b> <b>MOTHER'S DAY PRESCHOOL STORYTIME</b> Fairfield and Wetherill Park libraries 10.30-11.30am <b>MOTHER'S DAY IN CABRAMATTA</b> 10am-1pm	<b>11</b> <b>FAIRFIELD CITY MARKETS</b> 9am-4pm
<b>12</b> <b>MOTHER'S DAY</b>	<b>13</b>	<b>14</b> <b>GYMS IN PARKS TERM 2</b> 14 May-27 Jun, Tuesdays and Thursdays <b>OUTCOMES &amp; SERVICES COMMITTEE MEETINGS</b> 6.30pm	<b>15</b> <b>MENTAL HEALTH AWARENESS WEEK</b> <b>FAMILIES WEEK 15-21 May</b>	<b>16</b>	<b>17</b>	<b>18</b> <b>FAIRFIELD CITY MARKETS</b> 9am-4pm <b>INDIGENOUS FLORA PARK BUSHCARE GROUP</b> 9am-12pm
<b>19</b>  <b>DISCOVER FAIRFIELD HEIGHTS PARK EVENT</b>	<b>20</b> <b>NATIONAL SIMULTANEOUS PRESCHOOL STORYTIME</b> Smithfield Library 10.30-11.30am <b>NATIONAL VOLUNTEER WEEK</b>	<b>21</b>	<b>22</b> <b>NATIONAL SIMULTANEOUS PRESCHOOL STORYTIME</b> Bonnyrigg and Whitlam libraries 10.30-11.30am <b>INTERNATIONAL BIODIVERSITY DAY</b>	<b>23</b> <b>LIBRARY AND INFORMATION WEEK 23-29 May</b> <b>PENSION DAY</b>	<b>24</b> <b>NATIONAL SIMULTANEOUS PRESCHOOL STORYTIME</b> Fairfield and Wetherill Park libraries 10.30-11.30am	<b>25</b>  <b>CULINARY CARNIVAL</b> FAIRFIELD CITY CENTRE 11am-4pm <b>FAIRFIELD CITY MARKETS</b> 9am-4pm
<b>26</b> <b>NATIONAL SORRY DAY</b>	<b>27</b> <b>BOOK GROUPS</b> Smithfield Library 10-11.30am <b>NATIONAL RECONCILIATION WEEK 27 May-3 Jun</b>	<b>28</b> <b>COUNCIL MEETING</b> 7pm <b>NATIONAL RECONCILIATION WEEK FLAG RAISING EVENT</b>	<b>29</b>	<b>30</b>	<b>31</b> <b>RATES INSTALMENT DUE</b>	

- Fairfield City Council major events
- Other Council events
- FCHQ = Fairfield City HQ
- FCEM = Fairfield City Museum & Gallery
- FYCC = Fairfield Youth and Community Centre
- Sports and leisure centre events
- Public holidays and school terms
- Library events
- Pension days
- Significant events

# MAY

Fairfield Community Nursery



*Love*  
where you  
*Live*  
**JUNE**  
**2024**



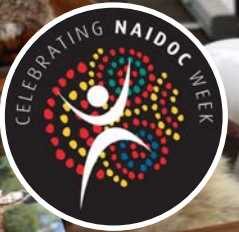
Orphan School Creek

SUN	MON	TUE	WED	THU	FRI	SAT
30  <b>STATE SCHOOL TERM 2 ENDS</b> (check with your school to confirm)						1  <b>OPEN LAB</b> every Saturday at Whitlam and Bonnyrigg libraries <b>FAIRFIELD CITY MARKETS</b> 9am-4pm
2  <b>FREE WSCN COMMUNITY BIKE RIDES</b> Fairfield Showground 9am-12noon <b>FAIRFIELD YOUTH AND COMMUNITY CENTRE</b> Free Open Day 11am-3pm	3  <b>FOCUS ON LIBRARY APPS</b> Bonnyrigg Library 10am-1pm <b>TRAFFIC COMMITTEE</b> 2.30pm <b>MABO DAY - MARKING NATIVE TITLE DECISION</b>	4  <b>JP</b> every Tuesday at Fairfield Library 1.30-3pm Wetherill Park Library 11am-1pm	5  <b>SEWING CENTRE</b> every Wednesday a Whitlam Library 10am-2pm <b>JP</b> every Wednesday at Whitlam Library 9.30am-12pm Bonnyrigg Library 3-5pm <b>WORLD ENVIRONMENT DAY</b>	6  <b>ADULTS READING ALOUD</b> every Thursday at Fairfield Library 10-11.30am <b>PENSION DAY</b>	7  <b>BOOK GROUPS</b> Wetherill Park Library 10am-12.30pm	8  <b>FAIRFIELD CITY MARKETS</b> 9am-4pm
9	10  <b>NATIONAL DIABETES WEEK</b> <b>KING'S BIRTHDAY</b>	11  <b>OUTCOMES &amp; SERVICES COMMITTEE MEETINGS</b> 6.30pm	12	13	14	15  <b>INDIGENOUS FLORA PARK BUSHCARE GROUP</b> 9am-12pm <b>FAIRFIELD CITY MARKETS</b> 9am-4pm <b>WORLD ELDER ABUSE AWARENESS DAY</b>
16   <b>EID AL-ADHA</b> 16-20 June <b>REFUGEE WEEK</b>	17	18	19	20  <b>WORLD REFUGEE DAY</b> <b>PENSION DAY</b>	21	22  <b>KHALED SABSABI EXHIBITION OPENS</b> FCMG <b>FAIRFIELD CITY MARKETS</b> 9am-4pm
23	24  <b>BOOK GROUPS</b> Smithfield Library 10-11.30am	25  <b>COUNCIL MEETING</b> 7pm	26	27	28	29  <b>FAIRFIELD CITY MARKETS</b> 9am-4pm

- Fairfield City Council major events
- Other Council events
- Sports and leisure centre events
- Public holidays and school terms
- FCHQ = Fairfield City HQ
- FCMG = Fairfield City Museum & Gallery
- FYCC = Fairfield Youth and Community Centre
- Library events
- Pension days
- Significant events

# JUNE

NAIDOC Week celebrations



**JULY 2024**  
**LOCAL GOVERNMENT WEEK 2024**



**FREE PLANT GIVEAWAY!**  
Grown by our Volunteers at our Malvern Community Nursery



Local Government Week

SUN	MON	TUE	WED	THU	FRI	SAT
	<b>1</b>	<b>2</b>	<b>3</b>	<b>4</b>	<b>5</b>	<b>6</b>
	<b>FOCUS ON LIBRARY APPS</b> Bonnyrigg Library 10am-1pm	<b>JP</b> every Tuesday at Fairfield Library 1.30-3pm Wetherill Park Library 11am-1pm	<b>SEWING CENTRE</b> every Wednesday at Whitlam Library 10am-2pm <b>JP</b> every Wednesday at Whitlam Library 9.30am-12pm Bonnyrigg Library 3-5pm	<b>ADULTS READING ALOUD</b> every Thursday at Fairfield Library 10-11.30am <b>PENSION DAY</b>		<b>OPEN LAB</b> every Saturday at Whitlam and Bonnyrigg libraries <b>FAIRFIELD CITY MARKETS</b> 9am-4pm
<b>7</b>	<b>8</b>	<b>9</b>	<b>10</b>	<b>11</b>	<b>12</b>	<b>13</b>
<b>FREE WSCN COMMUNITY BIKE RIDES</b> Fairfield Showground 9am-12noon <b>FAIRFIELD YOUTH AND COMMUNITY CENTRE</b> Free Open Day 11am-3pm <b>NAIDOC WEEK</b>	<b>LEARN TO SWIM SCHOOL HOLIDAY PROGRAM COMMENCES</b> Leisure Centres	<b>WINTER SCHOOL HOLIDAY PROGRAM BEGINS</b> FCMG <b>OUTCOMES &amp; SERVICES COMMITTEE MEETINGS</b> 6.30pm <b>NAIDOC FAMILY FUN DAY</b> 11am-3pm				<b>FAIRFIELD CITY MARKETS</b> 9am-4pm
<b>14</b>	<b>15</b>	<b>16</b>	<b>17</b>	<b>18</b>	<b>19</b>	<b>20</b>
 <b>DISCOVER BONNYRIGG TOWN CENTRE PARK EVENT</b>				<b>PENSION DAY</b>		<b>INDIGENOUS FLORA PARK BUSHCARE GROUP</b> 9am-12pm <b>FAIRFIELD CITY MARKETS</b> 9am-4pm
<b>21</b>	<b>22</b>	<b>23</b>	<b>24</b>	<b>25</b>	<b>26</b>	<b>27</b>
<b>FAIRFIELD CITY FUN RUN</b>	<b>LEARN TO SWIM TERM 3 COMMENCES</b> Leisure Centres <b>STATE SCHOOL TERM 3 BEGINS</b> (check with your school to confirm)	<b>COUNCIL MEETING</b> 7pm			<b>SCHOOLS TREE DAY</b>	<b>FAIRFIELD CITY MARKETS</b> 9am-4pm
<b>28</b>	<b>29</b>	<b>30</b>	<b>31</b>			
<b>NATIONAL TREE DAY</b>	<b>BOOK GROUPS</b> Smithfield Library 10-11.30am <b>LOCAL GOVERNMENT WEEK</b> 29 Jul-4 Aug					

- Fairfield City Council major events
- Sports and leisure centre events
- Other Council events
- Public holidays and school terms
- FCHQ = Fairfield City HQ
- Library events
- FCMG = Fairfield City Museum & Gallery
- Pension days
- FYCC = Fairfield Youth and Community Centre
- Significant events

# JULY



OPEN LIBRARIES  
**AUGUST**  
2024

FAIRFIELD CITY  
**HQ**



SUN	MON	TUE	WED	THU	FRI	SAT
				1	2	3
				ADULTS READING ALOUD every Thursday at Fairfield Library 10-11.30am <b>PENSION DAY</b>		<b>OPEN LAB</b> every Saturday at Whitlam and Bonnyrigg libraries <b>FAIRFIELD CITY MARKETS</b> 9am-4pm
4 <b>FREE WSCN COMMUNITY BIKE RIDES</b> Fairfield Showground 9am-12noon <b>FAIRFIELD YOUTH AND COMMUNITY CENTRE</b> Free Open Day 11am-3pm <b>NATIONAL ABORIGINAL &amp; TORRES STRAIT ISLANDER CHILDREN'S DAY</b>	5  <b>FOCUS ON LIBRARY APPS</b> Bonnyrigg Library 10am-1pm <b>HOMELESSNESS WEEK</b> 5-11 Aug	6 <b>JP</b> every Tuesday at Fairfield Library 1.30-3pm Wetherill Park Library 11am-1pm <b>GYMS IN PARKS TERM 3</b> Tuesdays and Thursdays	7 <b>SEWING CENTRE</b> every Wednesday at Whitlam Library 10am-2pm <b>JP</b> every Wednesday at Whitlam Library 9.30-12pm Bonnyrigg Library 3-5pm	8	9 <b>INTERNATIONAL DAY OF WORLD'S INDIGENOUS PEOPLES</b>	10 <b>FAIRFIELD CITY MARKETS</b> 9am-4pm
11	12  <b>2025 AUSTRALIA DAY COMMUNITY AWARDS</b> Nominations open <b>TRAFFIC COMMITTEE</b> 2.30pm <b>INTERNATIONAL YOUTH DAY</b>	13 <b>OUTCOMES &amp; SERVICES COMMITTEE MEETINGS</b> 6.30pm	14	15 <b>PENSION DAY</b>	16	17 <b>FAIRFIELD CITY MARKETS</b> 9am-4pm
18  <b>DISCOVER BRENNAN PARK SMITHFIELD EVENT</b>	19 <b>BOOK WEEK PRESCHOOL STORYTIME READING IS MAGIC</b> Smithfield Library 10.30-11.30am	20	21 <b>BOOK WEEK PRESCHOOL STORYTIME READING IS MAGIC</b> Bonnyrigg and Whitlam libraries 10.30-11.30am	22	23 <b>BOOK WEEK PRESCHOOL STORYTIME READING IS MAGIC</b> Fairfield and Wetherill Park libraries 10.30-11.30am	24 <b>FAIRFIELD CITY MARKETS</b> 9am-4pm
25	26 <b>BOOK GROUPS</b> Smithfield Library 10-11.30am	27 <b>COUNCIL MEETING</b> 7pm	28 <b>FATHER'S DAY IN FAIRFIELD HEIGHTS</b> 1.30-3.30pm	29 <b>FATHER'S DAY IN FAIRFIELD CITY CENTRE</b> 11.30am-1.30pm <b>PENSION DAY</b>	30 <b>WEAR IT PURPLE DAY</b>	31 <b>FAIRFIELD CITY MARKETS</b> 9am-4pm <b>RATES INSTALMENT DUE</b>

- Fairfield City Council major events
  - Other Council events
  - Sports and leisure centre events
  - Public holidays and school terms
  - Library events
  - Pension days
  - Significant events
- FCHQ = Fairfield City HQ  
FCMG = Fairfield City Museum & Gallery  
FYCC = Fairfield Youth and Community Centre

# AUGUST

CABRAMATTA  
**MOON**  
FESTIVAL  
SEPTEMBER  
2024





SUN	MON	TUE	WED	THU	FRI	SAT
<b>1</b> <b>FREE WSCN COMMUNITY BIKE RIDES</b> Fairfield Showground 9am-12noon <b>FAIRFIELD YOUTH AND COMMUNITY CENTRE</b> Free Open Day 11am-3pm <b>CHILD PROTECTION WEEK EVENT</b> <b>FATHER'S DAY</b>	<b>2</b> <b>FOCUS ON LIBRARY APPS</b> Bonnyrigg Library 10am-1pm <b>FATHER'S DAY PRESCHOOL STORYTIME</b> Smithfield Library 10.30-11.30am <b>COMMUNITY DEVELOPMENT GRANTS OPEN</b> <b>MULTICULTURAL HEALTH WEEK</b>	<b>3</b> <b>JP</b> every Tuesday at Fairfield Library 1.30-3pm Wetherill Park Library 11am-1pm	<b>4</b> <b>SEWING CENTRE</b> every Wednesday at Whitlam Library 10am-2pm <b>JP</b> every Wednesday at Whitlam Library 9.30-12pm Bonnyrigg Library 3-5pm	<b>5</b> <b>ADULTS READING ALOUD</b> every Thursday at Fairfield Library 10-11.30am	<b>6</b> <b>BOOK GROUPS</b> Wetherill Park Library 10am-12.30pm <b>FATHER'S DAY PRESCHOOL STORYTIME</b> Fairfield and Wetherill Park libraries 10.30-11.30am	<b>7</b> <b>OPEN LAB</b> every Saturday at Whitlam and Bonnyrigg libraries <b>FAIRFIELD CITY MARKETS</b> 9am-4pm <b>THREATENED SPECIES DAY</b> <b>INDIGENOUS LITERACY DAY</b>
<b>8</b>  <b>CABRAMATTA MOON FESTIVAL</b> Cabramatta Town Centre 11am-8pm	<b>9</b>	<b>10</b>	<b>11</b>	<b>12</b> <b>R U OK? DAY</b> <b>PENSION DAY</b>	<b>13</b> <b>ANNIVERSARY OF THE UN DECLARATION ON THE RIGHTS OF INDIGENOUS PEOPLE (UNDRIP)</b>	<b>14</b> <b>LOCAL GOVERNMENT ELECTIONS</b> <b>FAIRFIELD CITY MARKETS</b> 9am-4pm
<b>15</b>	<b>16</b>	<b>17</b>  <b>AUSTRALIAN CITIZENSHIP DAY</b>	<b>18</b>	<b>19</b>	<b>20</b>	<b>21</b> <b>COMMUNITY NURSERY OPEN DAY</b> Nalawala Sustainability Centre 9am-3pm <b>INDIGENOUS FLORA PARK BUSHCARE GROUP</b> 9am-12pm <b>FAIRFIELD CITY MARKETS</b> 9am-4pm
<b>22</b>	<b>23</b>	<b>24</b> <b>COUNCIL MEETING</b> 7pm	<b>25</b>	<b>26</b> <b>PENSION DAY</b>	<b>27</b> <b>BOOK GROUPS</b> Bonnyrigg & Fairfield libraries 10.30am-12.30pm <b>STATE SCHOOL TERM 3 ENDS</b> (check with your school to confirm)	<b>28</b> <b>AQUATOPIA WATER PARK OPENS</b> <b>FAIRFIELD CITY MARKETS</b> 9am-4pm
<b>29</b>	<b>30</b> <b>BOOK GROUPS</b> Smithfield Library 10-11.30am <b>LEARN TO SWIM TERM SCHOOL HOLIDAY PROGRAM COMMENCES</b> Leisure Centres					

- Fairfield City Council major events
- Other Council events
- Sports and leisure centre events
- Public holidays and school terms
- FCHQ = Fairfield City HQ
- Library events
- FCMG = Fairfield City Museum & Gallery
- Pension days
- FYCC = Fairfield Youth and Community Centre
- Significant events

# SEPTEMBER

Halloween at the Museum

Halloween at Canley Heights



**OCTOBER**  
**2024**



Grandparent's Day at Calmsley Hill City Farm

SUN	MON	TUE	WED	THU	FRI	SAT
		<b>1</b> JP every Tuesday at Fairfield Library 1.30-3pm Wetherill Park Library 11am-1pm <b>SPRING SCHOOL HOLIDAY PROGRAM BEGINS</b> FCMG <b>MENTAL HEALTH MONTH</b>	<b>2</b> <b>SEWING CENTRE</b> every Wednesday at Whitlam Library 10am-2pm JP Whitlam Library 9.30-12pm Bonnyrigg Library 3-5pm	<b>3</b> <b>ADULTS READING ALOUD</b> every Thursday at Fairfield Library 10-11.30am	<b>4</b> <b>BOOK GROUPS</b> Wetherill Park Library 10am-12.30pm	<b>5</b> <b>OPEN LAB</b> every Saturday at Whitlam and Bonnyrigg libraries <b>FAIRFIELD CITY MARKETS</b> 9am-4pm
<b>6</b> <b>FREE WSCN COMMUNITY BIKE RIDES</b> Fairfield Showground 9am-12noon <b>FAIRFIELD YOUTH AND COMMUNITY CENTRE</b> Free Open Day 11am-3pm <b>DAYLIGHT SAVING TIME BEGINS</b> (clocks go forward one hour at 2am)	<b>7</b> <b>LABOUR DAY</b>	<b>8</b> <b>OUTCOMES &amp; SERVICES COMMITTEE MEETINGS</b> 6.30pm	<b>9</b>	<b>10</b> <b>PENSION DAY</b>	<b>11</b>	<b>12</b> <b>FAIRFIELD CITY MARKETS</b> 9am-4pm
<b>13</b>	<b>14</b> <b>LEARN TO SWIM TERM 4 COMMENCES</b> - Leisure Centres <b>TRAFFIC COMMITTEE</b> 2.30pm <b>GAMBLE AWARE WEEK</b> <b>STATE SCHOOL TERM 4 BEGINS</b> (check with your school to confirm)	<b>15</b> <b>ANTI-POVERTY WEEK</b>	<b>16</b>	<b>17</b>	<b>18</b>	<b>19</b> <b>MEHWISH IQBAL EXHIBITION OPENS</b> FCMG <b>INDIGENOUS FLORA PARK BUSHCARE GROUP</b> 9am-12pm <b>FAIRFIELD CITY MARKETS</b> 9am-4pm
<b>20</b>	<b>21</b> <b>GRANDPARENTS' DAY PRESCHOOL STORYTIME</b> Smithfield Library 10.30-11.30am <b>CHILDREN'S WEEK 21-29</b>	<b>22</b> <b>COUNCIL MEETING</b> 7pm	<b>23</b> <b>GRANDPARENTS' DAY PRESCHOOL STORYTIME</b> Bonnyrigg and Whitlam libraries 10.30-11.30am	<b>24</b> <b>PENSION DAY</b>	<b>25</b> <b>GRANDPARENTS' DAY PRESCHOOL STORYTIME</b> Fairfield and Wetherill Park libraries 10.30-11.30am	<b>26</b> <b>HALLOWEEN IN CANLEY HEIGHTS</b> 4-8pm Fireworks at 8pm <b>FAIRFIELD CITY MARKETS</b> 9am-4pm <b>GRANDPARENTS' DAY EVENT</b>
<b>27</b> <b>NATIONAL GRANDPARENTS' DAY</b>	<b>28</b> <b>BOOK GROUPS</b> Smithfield Library 10-11.30am <b>HALLOWEEN PRESCHOOL STORYTIME</b> Smithfield Library 10.30-11.30am <b>2025 WOMEN'S DAY AWARDS</b> Nominations Open	<b>29</b> <b>GYMS IN PARKS TERM 4</b> 29 Oct-12 Dec Tuesdays and Thursdays	<b>30</b> <b>HALLOWEEN PRESCHOOL STORYTIME</b> Bonnyrigg and Whitlam Libraries 10.30-11.30am	<b>31</b> <b>HALLOWEEN AT THE MUSEUM</b> FCMG 5-8pm <b>HALLOWEEN</b>		

- Fairfield City Council major events
- Other Council events
- FCHQ = Fairfield City HQ
- FCMG = Fairfield City Museum & Gallery
- FYCC = Fairfield Youth and Community Centre
- Sports and leisure centre events
- Public holidays and school terms
- Library events
- Pension days
- Significant events

# OCTOBER



**NOVEMBER**  
**2024**



SUN	MON	TUE	WED	THU	FRI	SAT
					<b>1</b>  <b>HALLOWEEN PRESCHOOL STORYTIME</b> Fairfield and Wetherill Park libraries 10.30-11.30am <b>BOOK GROUPS</b> Wetherill Park Library 10am-12.30pm	<b>2</b>  <b>OPEN LAB</b> every Saturday at Whitlam and Bonnyrigg libraries <b>FAIRFIELD CITY MARKETS</b> 9am-4pm
<b>3</b>  <b>FREE WSCN COMMUNITY BIKE RIDES</b> Fairfield Showground 9am-12noon <b>FAIRFIELD YOUTH AND COMMUNITY CENTRE</b> Free Open Day 11am-3pm	<b>4</b>  <b>FOCUS ON LIBRARY APPS</b> Bonnyrigg Library 10am-1pm	<b>5</b>  <b>JP</b> every Tuesday at Fairfield Library 1.30-3pm Wetherill Park Library 11am-1pm	<b>6</b>  <b>SEWING CENTRE</b> every Wednesday at Whitlam Library 10am-2pm <b>JP</b> every Wednesday at Whitlam Library 9.30-12pm Bonnyrigg Library 3-5pm	<b>7</b>  <b>ADULTS READING ALOUD</b> every Thursday at Fairfield Library 10am-11.30am <b>PENSION DAY</b>	<b>8</b>	<b>9</b>  <b>FAIRFIELD CITY MARKETS</b> 9am-4pm
<b>10</b>	<b>11</b>   <b>REMEMBRANCE DAY</b> <b>LIGHT UP CHRISTMAS</b> Competition opens	<b>12</b>  <b>OUTCOMES &amp; SERVICES COMMITTEE MEETINGS</b> 6.30pm	<b>13</b>	<b>14</b>	<b>15</b>	<b>16</b>  <b>INDIGENOUS FLORA PARK BUSHCARE GROUP</b> 9am-12pm <b>FAIRFIELD CITY MARKETS</b> 9am-4pm
<b>17</b>	<b>18</b>	<b>19</b>	<b>20</b>	<b>21</b>  <b>PENSION DAY</b>	<b>22</b>	<b>23</b>  <b>FAIRFIELD CITY MARKETS</b> 9am-4pm
<b>24</b>	<b>25</b>  <b>BOOK GROUPS</b> Smithfield Library 10-11.30am <b>16 DAYS OF ACTIVISM AGAINST GENDER BASED VIOLENCE CAMPAIGN</b>	<b>26</b>  <b>COUNCIL MEETING</b> 7pm	<b>27</b>	<b>28</b>	<b>29</b>	<b>30</b>  <b>FAIRFIELD CITY MARKETS</b> 9am-4pm <b>RATES INSTALMENT DUE</b>

- Fairfield City Council major events
- Other Council events
- FCHQ = Fairfield City HQ
- FCMG = Fairfield City Museum & Gallery
- FYCC = Fairfield Youth and Community Centre
- Sports and leisure centre events
- Public holidays and school terms
- Library events
- Pension days
- Significant events

# NOVEMBER

Christmas in Fairfield City Centre



Merry  
Christmas

AND A HAPPY NEW YEAR

DECEMBER  
2024



SUN	MON	TUE	WED	THU	FRI	SAT
<b>1</b> <b>FREE WSCN COMMUNITY BIKE RIDES</b> Fairfield Showground 9am-12noon <b>FAIRFIELD YOUTH AND COMMUNITY CENTRE</b> Free Open Day 11am-3pm <b>MAYOR'S SUMMER HOLIDAY PROGRAM COMMENCES</b> Open Libraries	<b>2</b> <b>FOCUS ON LIBRARY APPS</b> Bonnyrigg Library 10am-1pm	<b>3</b> <b>JP</b> every Tuesday at Fairfield Library 1.30-3pm Wetherill Park Library 11am-1pm <b>OUTCOMES &amp; SERVICES COMMITTEE MEETINGS</b> 6.30pm <b>INTERNATIONAL DAY OF PEOPLE WITH DISABILITY</b>	<b>4</b> <b>SEWING CENTRE</b> every Wednesday at Whitlam Library 10am-2pm <b>JP</b> every Wednesday at Whitlam Library 9.30-12pm Bonnyrigg Library 3-5pm <b>SENIORS CONCERT</b>	<b>5</b> <b>ADULTS READING ALOUD</b> every Thursday at Fairfield Library 10-11.30am <b>CHRISTMAS IN FAIRFIELD CITY CENTRE</b> 6.30-8.30pm <b>PENSION DAY</b>	<b>6</b> <b>CANLEY HEIGHTS CHILDREN'S CHRISTMAS</b> 3-7pm	<b>7</b> <b>OPEN LAB</b> every Saturday at Whitlam and Bonnyrigg libraries <b>FAIRFIELD CITY MARKETS</b> 9am-4pm
<b>8</b>	<b>9</b> <b>TRAFFIC COMMITTEE</b> 2.30pm	<b>10</b> <b>COUNCIL MEETING</b> 7pm <b>INTERNATIONAL HUMAN RIGHTS DAY</b>	<b>11</b> <b>SANTA VISITS FAIRFIELD HEIGHTS</b> 1.30-3.30pm	<b>12</b> <b>SANTA VISITS FAIRFIELD CITY CENTRE</b> 11.30am-1.30pm	<b>13</b>	<b>14</b> <b>CAROLS AND SANTA VISITS CABRAMATTA TOWN CENTRE</b> 10am-1pm <b>FAIRFIELD CITY MARKETS</b> 9am-4pm
<b>15</b>	<b>16</b>	<b>17</b>	<b>18</b>	<b>19</b> <b>PENSION DAY</b>	<b>20</b> <b>STATE SCHOOL TERM 4 ENDS</b> (check with your school to confirm)	<b>21</b> <b>INDIGENOUS FLORA PARK BUSHCARE GROUP</b> 9am-12pm <b>FAIRFIELD CITY MARKETS</b> 9am-4pm
<b>22</b>	<b>23</b>	<b>24</b>	<b>25</b> <b>CHRISTMAS DAY</b>	<b>26</b> <b>BOXING DAY</b>	<b>27</b>	<b>28</b>
<b>29</b>	<b>30</b>	<b>31</b>  <b>ILLUMINATE NYE 2024</b> Fairfield City Council's New Year's Eve Celebration Fairfield Showground 5-10pm				

- Fairfield City Council major events
- Other Council events
- FCHQ = Fairfield City HQ
- FCMG = Fairfield City Museum & Gallery
- FYCC = Fairfield Youth and Community Centre
- Sports and leisure centre events
- Public holidays and school terms
- Library events
- Pension days
- Significant events

# DECEMBER



# CONNECT WITH US

## YOUR ELECTED REPRESENTATIVES

### Frank Carbone Mayor of Fairfield City

fcarbone@fairfieldcity.nsw.gov.au  
9725 0203

@FC.FrankCarbone  
 @FC.FrankCarbone

### CONTACT US

**Phone** 9725 0222  
**NRS** 133 677 (Hearing Impaired)  
**TIS** 131 450 (Interpreter Service)

**Administration Centre**  
86 Avoca Road, Wakeley  
Monday to Friday  
8.30am-4.30pm

**Call Centre**  
Monday to Friday  
8.30am to 5pm

PO Box 21 Fairfield NSW 1860

mail@fairfieldcity.nsw.gov.au  
www.fairfieldcity.nsw.gov.au

#### Follow us

@fairfieldcity  
 @DiscoverFairfield



### FAIRFIELD/CABRAVALE WARD



#### Charbel Saliba Deputy Mayor

0427 725 422  
csaliba@fairfieldcity.nsw.gov.au



#### Milovan Karajic

0417 770 110  
mkarajic@fairfieldcity.nsw.gov.au



#### Kevin Lam

0483 809 606  
klam@fairfieldcity.nsw.gov.au



#### Carmen Lazar

0410 643 568  
clazar@fairfieldcity.nsw.gov.au



#### Dai Le

0410 899 787  
dle@fairfieldcity.nsw.gov.au



#### Kien Ly

0412 564 388  
kly@fairfieldcity.nsw.gov.au

### PARKS WARD



#### George Barcha

0427 901 166  
gbarcha@fairfieldcity.nsw.gov.au



#### Reni Barkho

0404 445 551  
rbarkho@fairfieldcity.nsw.gov.au



#### Michael Mijatovic

0432 442 921  
mmijatovic@fairfieldcity.nsw.gov.au



#### Hugo Morvillo

0438 530 131  
hmorvillo@fairfieldcity.nsw.gov.au



#### Andrew Rohan

0431 264 990  
arohan@fairfieldcity.nsw.gov.au



#### Marie Saliba

0437 984 704  
msaliba@fairfieldcity.nsw.gov.au

Fairfield City Council acknowledges the traditional custodians of the land in which the Fairfield Local Government Area is situated - the Cabrogal of the Darug Nation.

Information is correct at the time of printing November 2023. Dates and events are subject to change or cancellation. Visit [www.fairfieldcity.nsw.gov.au](http://www.fairfieldcity.nsw.gov.au) for more information.